

CTBHP Bi-Monthly Data Reporting for the Adult Quality, Access, & Policy Committee

2023

Daniel Langless, LMFT
Lynn Kelley, MsEd

March 14, 2023

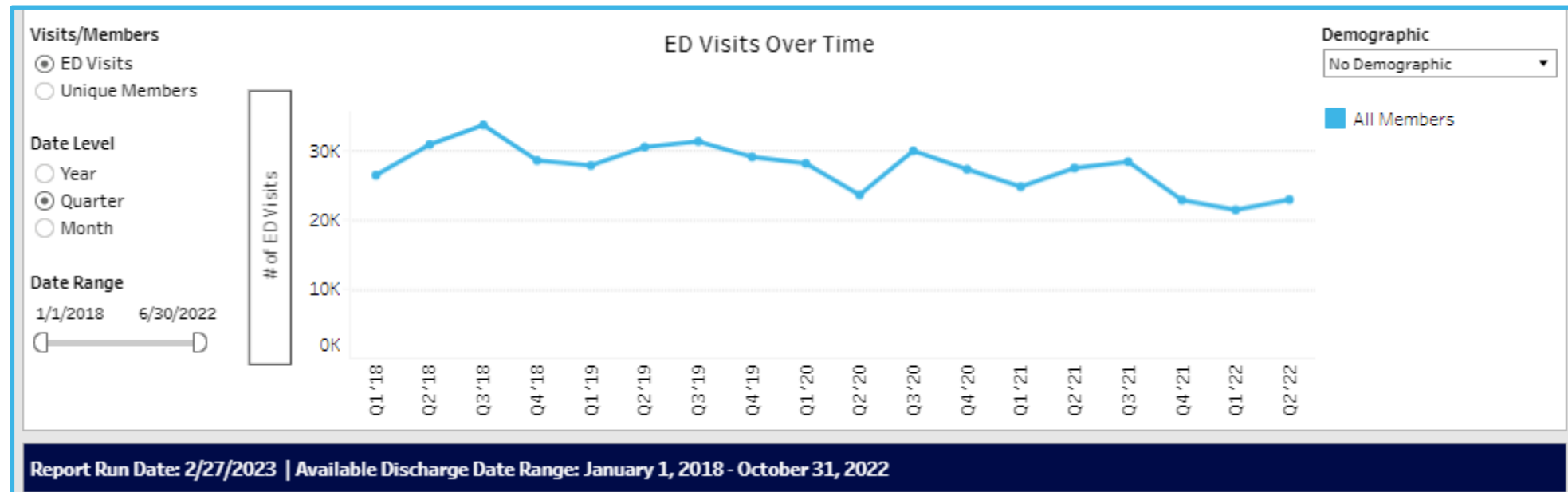
Chapter

01

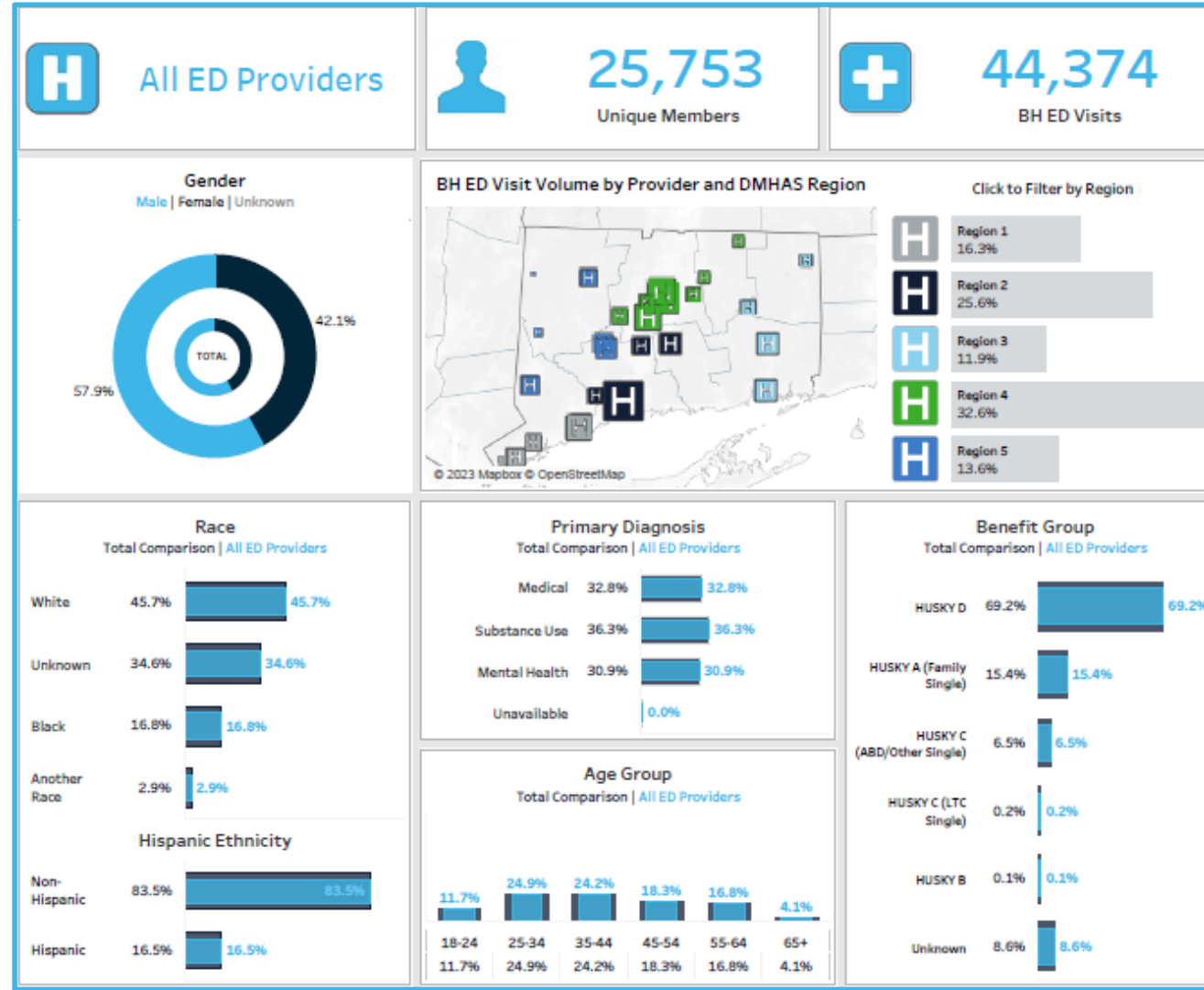
Adult Behavioral Health Emergency Department Utilization Q1/Q2 2022

Adult BH ED Utilization – Discharges by Quarter

Q1 18 to Q2 22

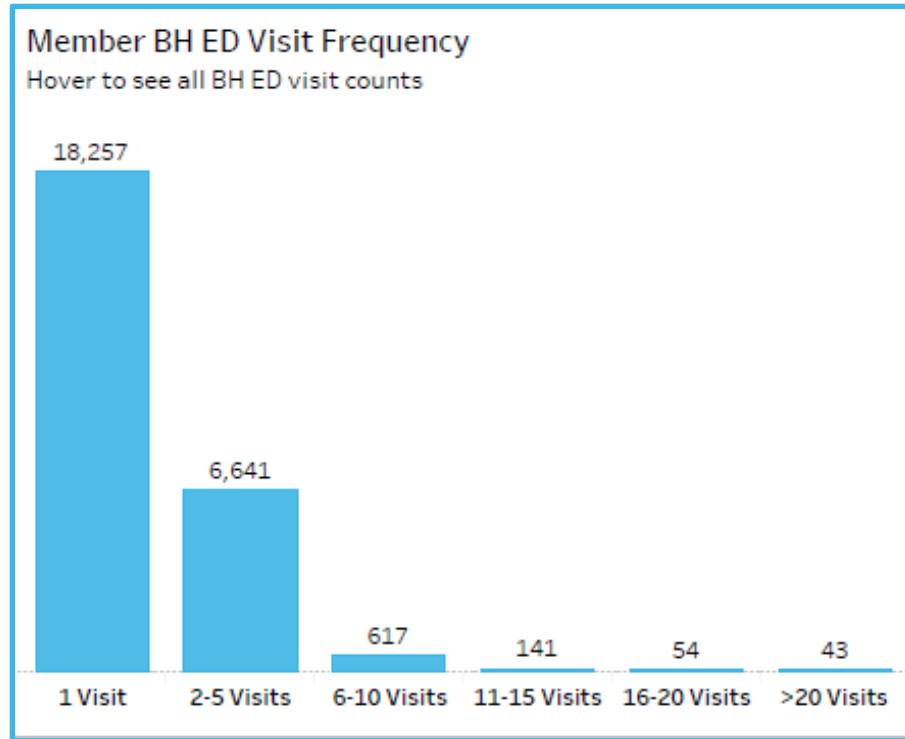


Adult BH ED Utilization – Demographics Q1 to Q2 22



Adult BH ED Visit Frequency

Q1 to Q2 22

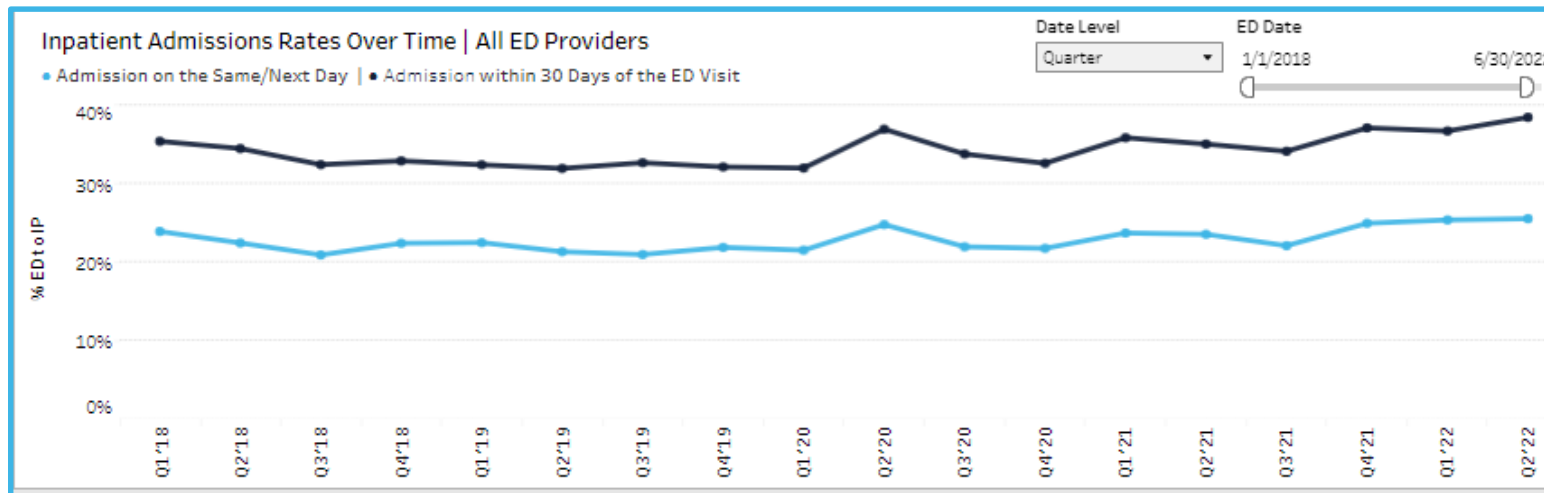


Member BH ED Visit Frequency by Primary Diagnosis

	Medical	Mental Health	Substance Use	Unavailable
1 Visit	10,076	7,070	6,224	1
2-5 Visits	1,695	2,002	2,525	
6-10 Visits	38	137	211	
11-15 Visits	3	22	54	
16-20 Visits	2	7	13	
>20 Visits	1	6	18	

Adult BH ED to Inpatient Stay

Q1 to Q2 22



ED to IP on Same/Next Day

Admitting Inpatient LOC

No IP Admission - 74.8%

Inpatient Psych Facility - 11.7%

Inpatient Medical - 6.2%

Withdrawal Mgmt. Hospital - 5.3%

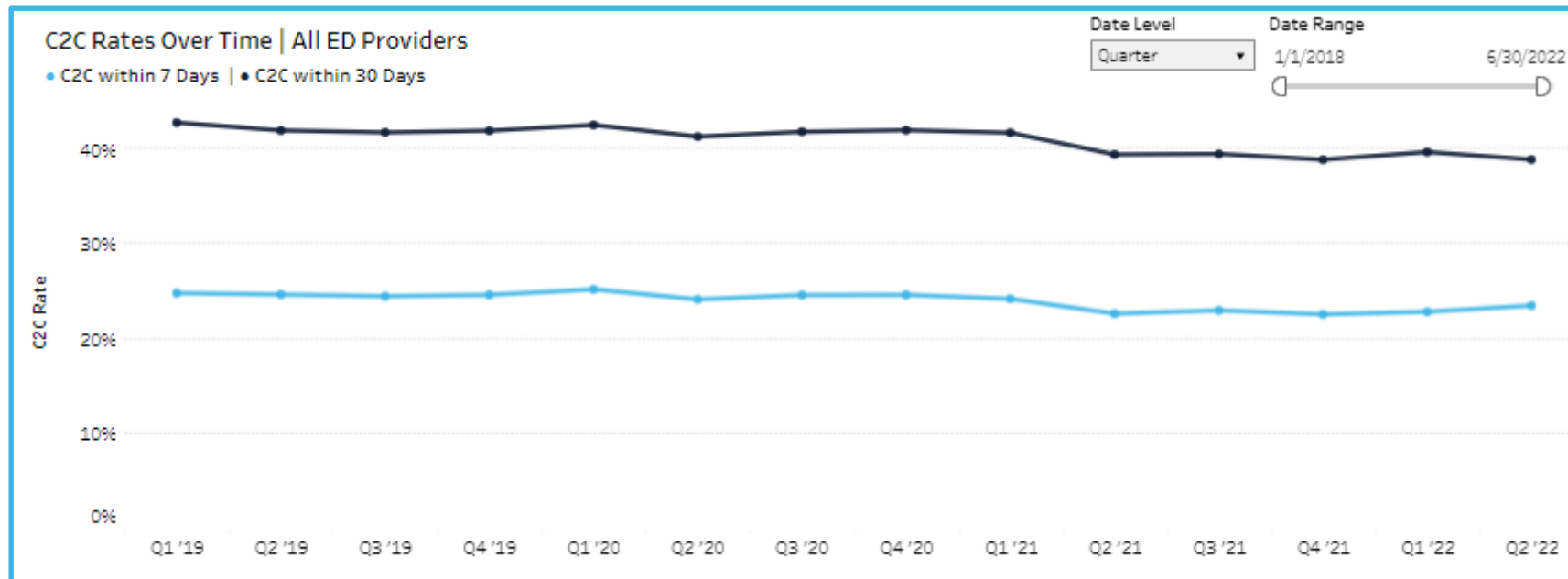
Withdrawal Mgmt. - Freestanding - 1.9%

Withdrawal Mgmt. State Hospital - 0.1%

Inpatient Psych State Facility - 0.0%

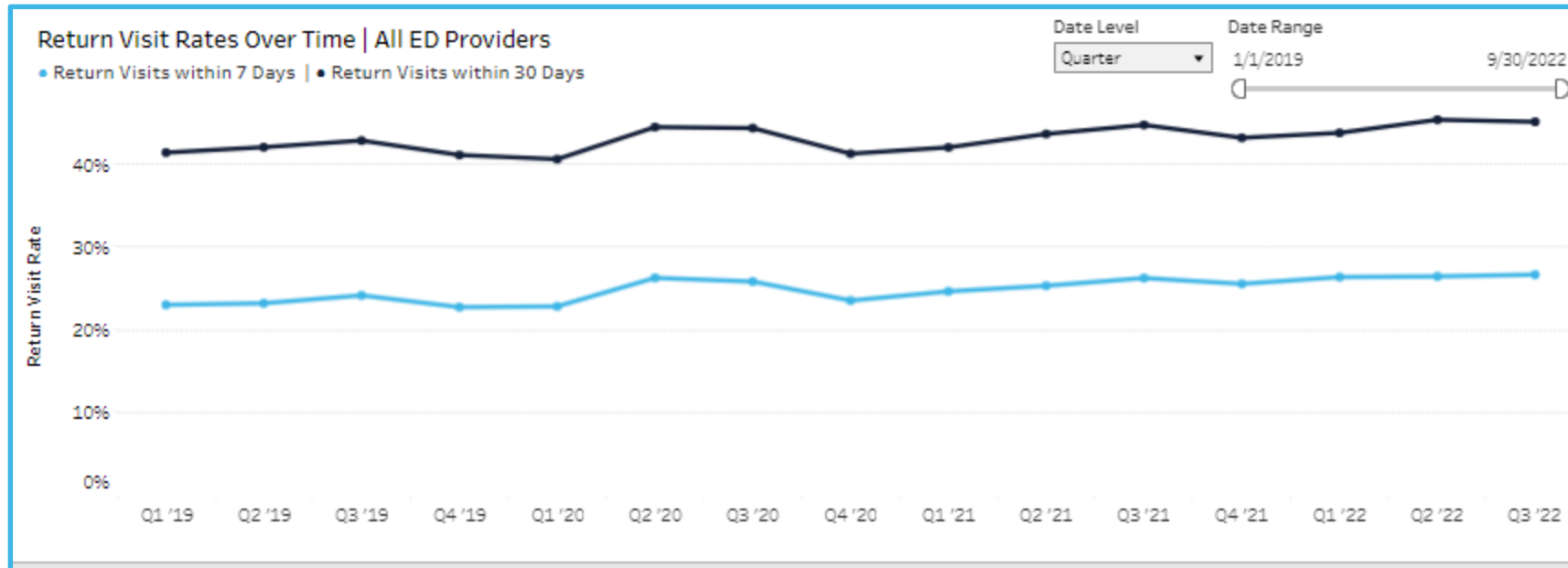
Adult BH ED Connect to Care

Q1 18 to Q2 22



Adult BH ED Return Visits

Q1 18 to Q2 22



Thank You

Contact Us



 877-552-8247

 www.beaconhealthoptions.com | www.ctbhp.com

 CTBHP@beaconhealthoptions.com